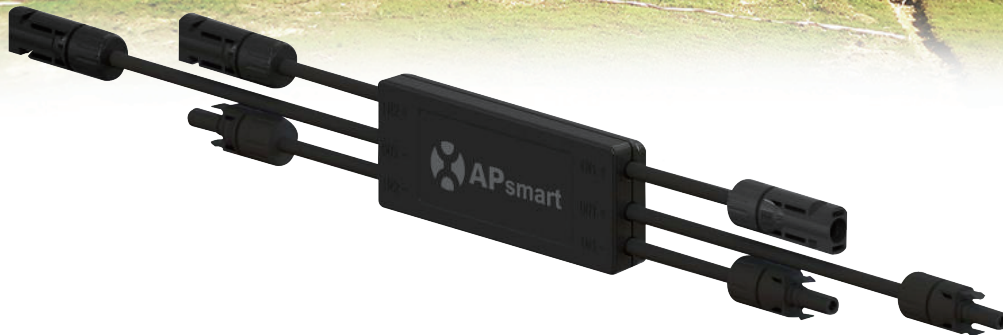




日揚國際事業股份有限公司  
JD Auspice Co., Ltd.

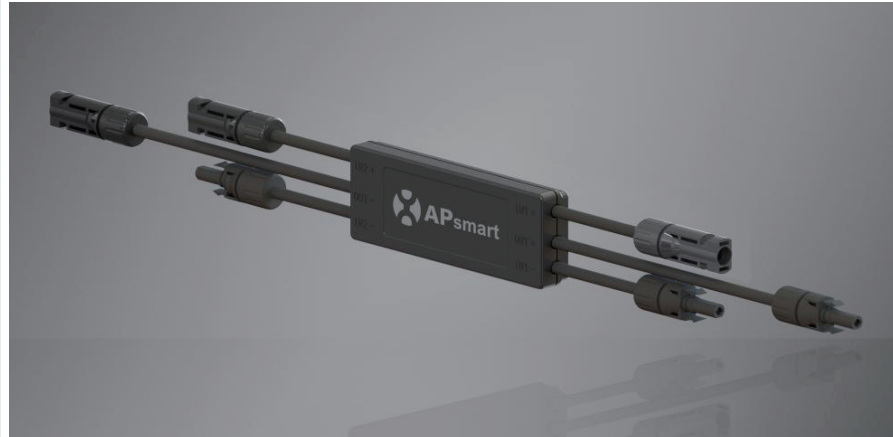
## JDA RSD-D-H Datasheet





# JDA RSD-D-H

- Meets NEC 2017&2020 (690.12) requirements
- Executes rapid shutdown of system when Transmitter-PLC signal is absent
- Meets SunSpec requirements
- Dual-input channel



## ◆ RSD-D-H Technical Data

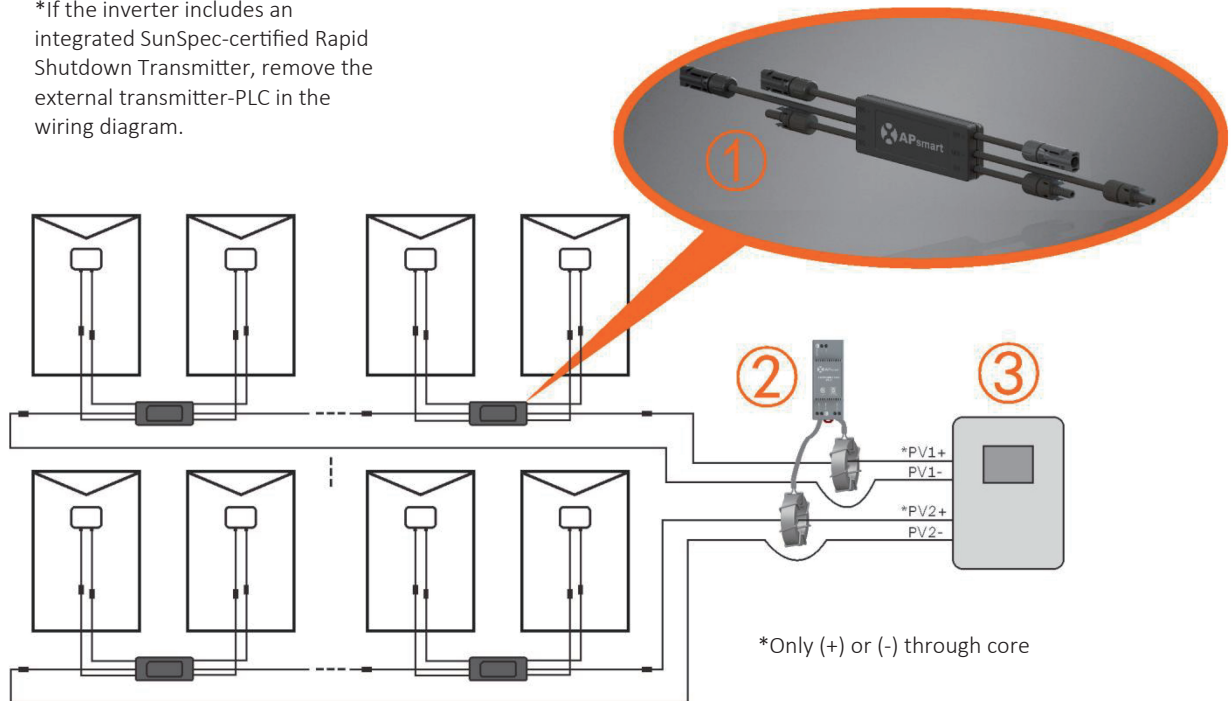
MODEL	RSD-D-H
INPUT DATA (DC)	
Maximum Input operating Voltage	120V Per Channel
Maximum Cont. Input Current (Imax)	15A Per Channel
OUTPUT DATA (DC)	
Maximum Output operating Voltage	240V
Maximum Cont. Output Current	15A
Maximum System Voltage	1000V/1500V
MECHANICAL DATA	
Operating Ambient Temperature Range	-40 °C to + 75 °C (-40 oF to +167 oF )
Dimensions (without cable & connectors)	5.5" x 2" x 0.8"(140 mm x 50.6 mm x 20 mm)
Cable Length	Input 500mm/Output 2200mm
Cable Cross Section Size	TUV:4mm <sup>2</sup> /UL:12AWG
Connector	MC4 or Customize
Enclosure Rating	NEMA Type 6P/IP68
Over Temperature protection	Yes
FEATURES & COMPLIANCE	
Communication Compliance	PLC
Safety Compliance	NEC 2017&2020 (690.12); UL1741

RSD-D-H meets SunSpec requirements, maintaining normal function by continually receiving a heart-beat signal from the APsmart Transmitter. The RSD-D-H executes rapid system shutdown when Transmitter signal is absent. Users can manually execute rapid shutdown using Transmitter breaker switch.

### ◆ RSD-D-H Wiring Diagram

- ① RSD-D-H
- ② Transmitter-PLC
- ③ Inverter\*


\*If the inverter includes an integrated SunSpec-certified Rapid Shutdown Transmitter, remove the external transmitter-PLC in the wiring diagram.






日煬國際事業股份有限公司  
JD Auspice Co., Ltd.



 [www.jdauspice.com](http://www.jdauspice.com)



 [@jdauspice](https://www.facebook.com/jdauspice)



 ID : @jdapv

